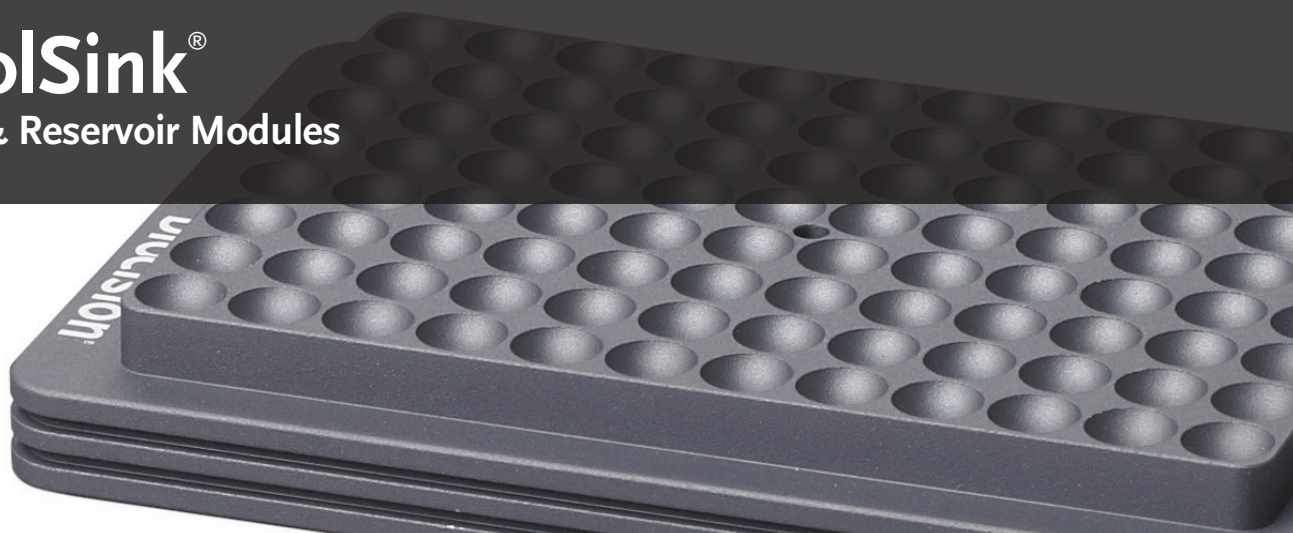


CoolSink®

Plate & Reservoir Modules



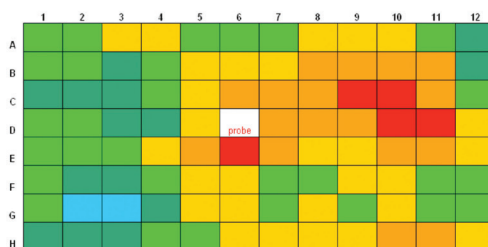
CoolSink thermo-conductive metal alloy plate and reservoir modules provide uniform temperature to all wells, regardless of position. Place the CoolSink module directly onto a temperature source such as ice, dry ice, liquid nitrogen or waterbaths, and it will rapidly adapt to that temperature - from -196°C to >+100°C. CoolSink modules ensure temperature sample uniformity when cooling, (snap)/freezing or heating/thawing samples. All CoolSink modules can be autoclaved, high heat sterilized or decontaminated with bleach, alcohol or other disinfectants or lab detergents.

Problem: plate directly on crushed ice



4.5°C to 7.4°C

7.0 - 7.4	Red
6.5 - 6.9	Orange
6.0 - 6.4	Yellow
5.5 - 5.9	Light Green
5.0 - 5.4	Green
4.5 - 4.9	Blue



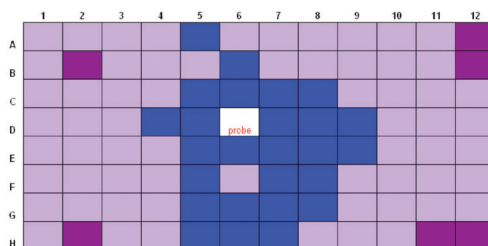
Final well temperature for 96-well flat bottom plates. Colors represent 0.5°C temperature intervals of the corresponding plate wells. **(Top)** Plate directly on crushed ice does not reach 4°C in any of the wells and well-to-well temperature is uneven. **(Bottom)** Plate placed on CoolSink 96F module and then placed on ice shows more uniform well-to-well temperature and all wells at or below 4°C. (Blue center plate wells are due to curvature of the underside of the plate.) The white cell represents the well that was fitted with a thermocouple probe.

Solution: plate on CoolSink 96F module



2.5°C to 4.4°C

4.0 - 4.4	Dark Blue
3.5 - 3.9	Medium Blue
3.0 - 3.4	Light Blue
2.5 - 2.9	Very Light Blue



General Purpose Plate Modules

For tissue culture and assay plates

BCS-101	CoolSink 48	6-, 12-, 24-, 48-well tissue culture plate
BCS-106	CoolSink 96F	96-well flat-bottom plate
BCS-107	CoolSink 96U	96-well u-bottom plate

All modules: L 13.1 x W 8.9 x H 1.8 cm.



Automation-Friendly Plate Modules

SBS-compatible for use on robotic instruments

BCS-536	CoolSink XT 96F	96-well flat-bottom plate
BCS-537	CoolSink XT 96U	96-well u-bottom plate

All modules: L 12.8 x W 8.5 x H 1.7 cm



Reservoir Modules

For reagent reservoirs

BCS-180	CoolSink BX50, 50 mL BioX-Resin™ reservoirs
BCS-183	CoolSink BX100, 100 mL BioX-Resin™ reservoirs
BCS-184	CoolSink LX55, 55ml reagent reservoirs

BCS-180 and BCS-183: L 8.9 x W 3.2 x H 2.8 cm.
BCS-184: L 14.6 x W 6.4 x H 3.5 cm.

*BioX-Resin™ is a trademark of and available through Biotix, Inc.